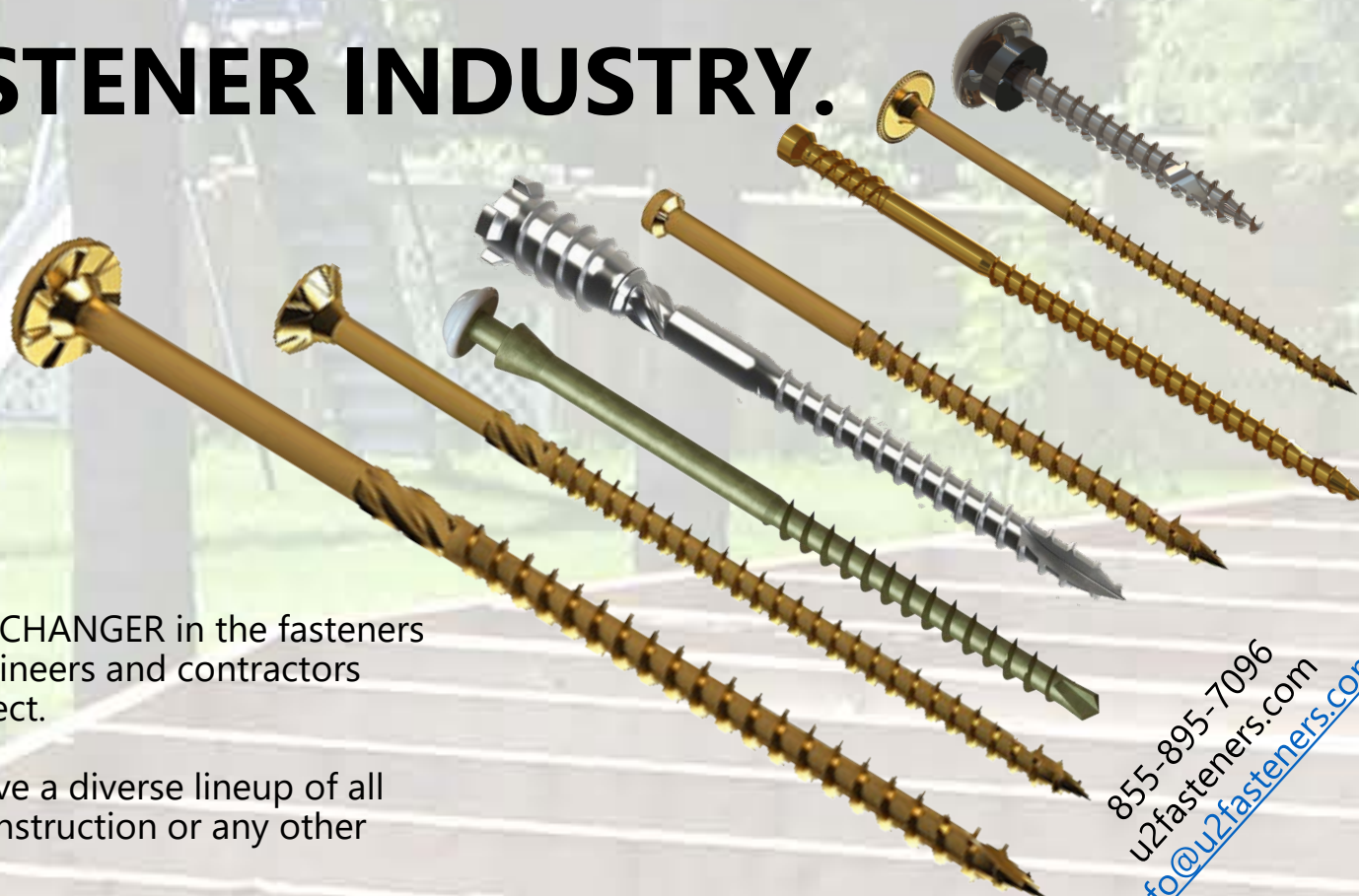




THE DRIVING FORCE IN THE FASTENER INDUSTRY.



U2 fasteners™ is the GAME CHANGER in the fasteners industry. Fasteners that engineers and contractors agree on for your next project.

With 8 product lines, we have a diverse lineup of all essential screw types for construction or any other project.

855-895-7096
u2fasteners.com
info@u2fasteners.com





GAME CHANGER FACTS

BUILDING CODE COMPLIANT = QUALITY FROM THE START

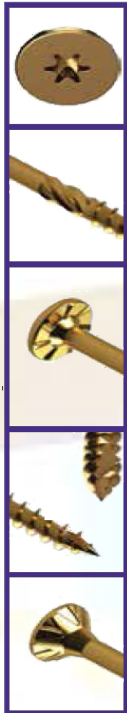
CR 6+ FREE COATING = HEALTH & SAFETY

TIGHT RECESS = EFFICIENCY

TAPPER POINT = TIME SAVER

REAMER THREAD = BATTERY LIFE & PHYSICAL ENERGY SAVER

EFFICIENCY + PRODUCTIVITY = MONEY SAVED \$\$\$\$



* **Tight Star Recess**

This patented driving system is designed to grasp the **U-BIT** tightly and the fastener can be installed with one hand.

* **Reamer Thread**

Enlarges the hole in the material to create a better passage when drawing material together to reduce tensions on the screw.

* **Talon Grip**

Underneath the screw head of the **CS Screw** the **Talon Grip** holds the screw tight to prevent loosening and uses its nibs to dig into the material when countersunk.

* **Tapper Point**

The **Tapper Point** consists of the **Cork Screw Start** and **Blade Cutting Thread** for easy piercing and alleviating strain on the material.

* **Burrow Pockets**

The **Burrow Pockets** are underneath the head of the **Universal Screw** and



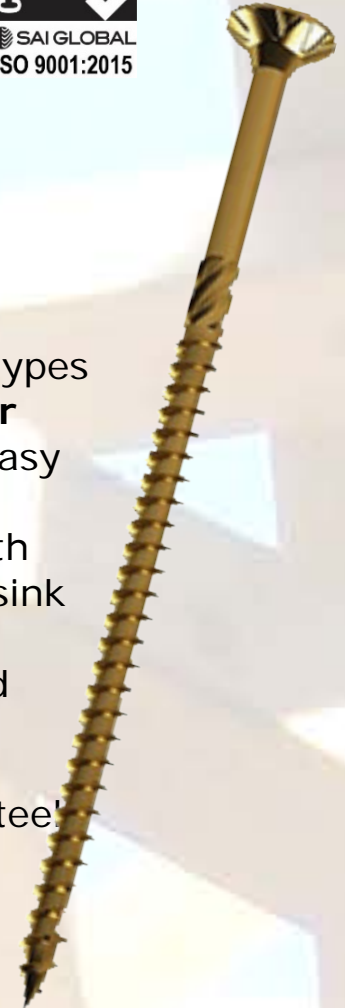


UNIVERSAL SCREW

U2 fasteners™ Universal screw is ideal for replacing those old deck screws and is **Structural & ACQ treated lumber compliant in IAPMO report ER-454**. The Universal screw's features work together to drive and secure this screw in many types of materials that are used in residential construction. Features include the **Tapper Point**, which consists of the **Cork Screw Start** and **Blade Cutting Thread** for easy piercing and alleviating strain on the material. The **Tight Star Recess** system is designed to grasp the U-Bit tightly and can be installed with one hand. Underneath the Universal head **Burrow Pockets** are dynamically engineered to help countersink into the toughest of materials. Below the smooth shank is the **Reamer Thread**, which enlarges the hole to create a passage when drawing materials together and reduces tension for the screw head.

The U2 Universal Screw is available in lengths from 1-1/4" to 12" in hardened steel and from 1- 1/4" to 4" in 316 Grade Stainless Steel.

#8 screws take a T-15 U-Bit. #9, #10, #12 screws take a T-25 U-Bit.



SCREW	BULK			BUCKET			PACKAGE		
SIZE	STOCK CODE	PCS	MSRP	STOCK CODE	PCS	MSRP	STOCK CODE	PCS	MSRP
6 X 1-1/2	U06101500B	8,000	\$ 286.32	U06101500P	928	\$ 38.20	U06101500H	100	\$ 5.12
8 X 1-1/4"	U08101250B	10,000	\$ 406.75	U08101250P	835	\$ 38.20	U08101250H	100	\$ 5.57
8 X 1-1/2"	U08101500B	6,500	\$ 268.26	U08101500P	750	\$ 38.20	U08101500H	100	\$ 5.84
8 X 2"	U08102000B	4,500	\$ 224.19	U08102000P	630	\$ 38.20	U08102000H	100	\$ 6.99
9 X 1-1/2"	U09101500B	5,200	\$ 252.93	U09101500P	610	\$ 38.20	U09101500H	100	\$ 6.77
9 X 1-3/4	U09101750B	4,500	\$ 275.41	U09101750P	542	\$ 38.20	U09101750H	100	\$ 7.76
9 X 2"	U09102000B	3,700	\$ 217.78	U09102000P	510	\$ 38.20	U09102000H	100	\$ 8.40
9 X 2-1/2"	U09102500B	2,600	\$ 178.59	U09102500P	435	\$ 38.20	U09102500H	100	\$ 9.77
9 X 2-3/4"	U09102750B	2,000	\$ 170.98	U09102750P	365	\$ 38.20	U09102750H	100	\$ 11.63
9 X 3-1/8"	U09103125B	1,500	\$ 147.10	U09103125P	330	\$ 38.20	U09103125H	100	\$ 13.48
10 X 1-5/8"	U10101625B	2,500	\$ 192.78	U10101625P	500	\$ 42.23	U10101625H	100	\$ 9.19
10 X 2-1/4"	U10102250B	2,500	\$ 251.32	U10102250P	500	\$ 55.02	U10102250H	100	\$ 11.96
10 X 2-1/2"	U10102500B	2,200	\$ 191.32	U10102500P	350	\$ 38.20	U10102500H	100	\$ 12.00
10 X 2-3/4"	U10102750B	2,000	\$ 196.33	U10102750P	295	\$ 38.20	U10102750H	100	\$ 14.04
10 X 3-1/8"	U10103125B	1,500	\$ 173.19	U10103125P	270	\$ 38.20	U10103125H	100	\$ 16.26
10 X 3-1/2"	U10103500B	1,200	\$ 164.84	U10103500P	225	\$ 38.20	U10103500H	50	\$ 9.83
10 X 4"	U10104000B	1,000	\$ 157.12	U10104000P	200	\$ 38.20	U10104000H	50	\$ 11.14
10 X 4-1/2"	U10104500B	800	\$ 152.11	U10104500P	170	\$ 38.20	U10104500H	50	\$ 12.99
12 X 3-1/2"	U12103500B	1,200	\$ 348.04	U12103500P	125	\$ 38.20	U12103500H	50	\$ 17.51
12 X 4"	U12104000B	800	\$ 243.19				U12104000H	50	\$ 19.00
12 X 5"	U12105000B	500	\$ 184.24				U12105000H	50	\$ 24.02
12 X 6"	U12106000B	500	\$ 240.25				U12106000H	50	\$ 28.93
12 X 7"	U12107000B	300	\$ 243.25				U12107000H	40	\$ 40.55
12 X 8"	U12108000B	300	\$ 380.60				U12108000H	40	\$ 63.43
12 X 10"	U12110000B	300	\$ 559.27				U12110000H	40	\$ 93.65
12 X 12"	U12112000B	300	\$ 715.46				U12112000H	40	\$ 119.50
UNIVERSAL SCREW (STAINLESS 316)									
8 X 1-1/4"	H08101250B	10,000	\$ 1,300.77	H08101250P	680	\$ 98.21	H08101250H	100	\$ 16.26
8 X 1-1/2"	H08101500B	6,500	\$ 884.60	H08101500P	620	\$ 98.21	H08101500H	100	\$ 17.01
8 X 1-3/4"	H08101750B	5,000	\$ 863.09	H08101750P	548	\$ 98.21	H08101750H	100	\$ 20.33
9 X 1-1/2"	H09101500B	5,000	\$ 936.20	H09101500P	545	\$ 98.21	H09101500H	100	\$ 19.47
9 X 2"	H09102000B	3,700	\$ 767.13	H09102000P	460	\$ 98.21	H09102000H	100	\$ 23.83
10 X 2-1/2"	H10102500B	2,200	\$ 545.12	H10102500P	295	\$ 98.21	H10102500H	100	\$ 35.87
10 X 2-3/4"	H10102750B	2,000	\$ 635.60	H10102750P	250	\$ 98.21	H10102750H	100	\$ 42.08
10 X 3"	H10103000B	1,500	\$ 529.47	H10103000P	210	\$ 98.21	H10103000H	100	\$ 51.17
10 X 4"	H10104000B	1,000	\$ 454.16	H10104000P	165	\$ 98.21	H10104000H	50	\$ 32.56



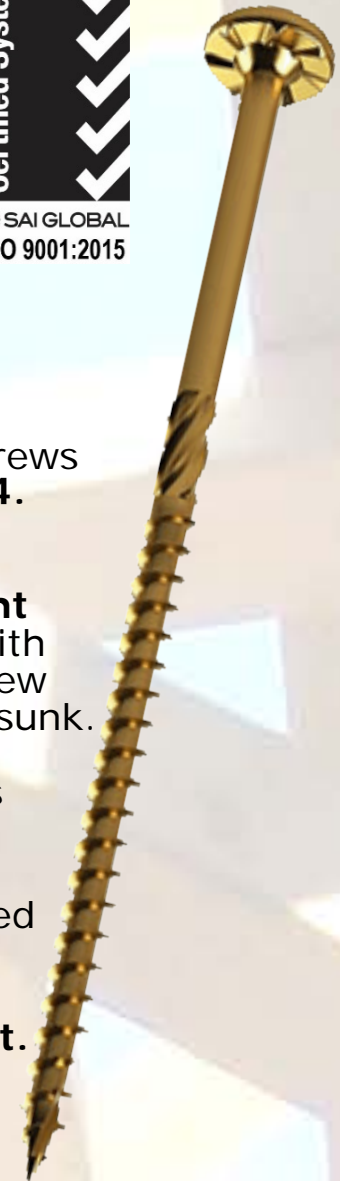


CONSTRUCTION SCREW

The U2 CS is the next generation of construction screws that are replacing lag screws and is **Structural & ACQ treated lumber compliant in IAPMO report ER-454**. The **Dome Head** enhances the structural capability. The U2 CS has the essential features: the **Tapper Point** which consists of the **Cork Screw Start** and **Blade Cutting Thread** for easy piercing and alleviating strain on the material. The **Tight Star Recess** system is designed to grasp the U-Bit tightly and can be installed with one hand. Underneath the screw head of the U2 CS the **Talon Grip** holds the screw tight to prevent loosening and uses its nibs to dig into the material when countersunk. Below the smooth shank is the **Reamer Thread**, which enlarges the hole in the material to create a larger passage when drawing materials together and reduces tension on the screw head.

The U2 Construction Screw is available in lengths from 3" to 20" made of hardened steel, and in lengths from 2-1/2" to 6" made of 316 Grade Stainless Steel.

#10 and # 1/4 screws take a T-25 U-Bit. #5/16 screws take a T-30 U-Bit. #3/8 screw takes a T-40 U-Bit.





CONSTRUCTION SCREW



SCREW SIZE	BULK STOCK CODE	PCS	MSRP	BUCKET STOCK CODE	PCS	MSRP	PACKAGE STOCK CODE	PCS	MSRP
10 X 1-1/2"	S10101500B	2,300	\$ 270.49	S10101500P	282	\$ 38.20	S10101500H	40	\$ 5.90
10 X 2"	S10102000B	1,600	\$ 205.75	S10102000P	258	\$ 38.20	S10102000H	40	\$ 6.46
10 X 2-1/2"	S10102500B	1,000	\$ 136.08	S10102500P	240	\$ 38.20	S10102500H	40	\$ 6.87
10 X 2-3/4"	S10102750B	1,000	\$ 159.85	S10102750P	207	\$ 38.20	S10102750H	40	\$ 8.10
10 X 3-1/8"	S10103125B	800	\$ 140.24	S10103125P	180	\$ 38.20	S10103125H	40	\$ 9.26
1/4 X 1-1/2"	S14101500B	1,000	\$ 147.15	S14101500P	225	\$ 38.20	S14101500H	40	\$ 7.38
1/4 X 2"	S14102000B	800	\$ 147.78	S14102000P	179	\$ 38.20	S14102000H	40	\$ 9.30
1/4 X 2-1/2"	S14102500B	700	\$ 140.03	S14102500P	166	\$ 38.20	S14102500H	40	\$ 10.07
1/4 X 3-1/8"	S14103125B	700	\$ 176.99	S14103125P	131	\$ 38.20	S14103125H	40	\$ 12.70
1/4 X 3-3/8"	S14103375B	400	\$ 123.28	S14103375P	107	\$ 38.20	S14103375H	40	\$ 15.84
5/16 X 2-1/2"	S20102500B	600	\$ 153.29				S20102500H	40	\$ 13.41
5/16 X 3-1/8"	S20103125B	500	\$ 171.47				S20103125H	40	\$ 14.89
5/16 X 4"	S20104000B	400	\$ 145.43				S20104000H	40	\$ 19.17
5/16 X 5"	S20105000B	300	\$ 161.25				S20105000H	40	\$ 28.74
5/16 X 6"	S20106000B	300	\$ 210.18				S20106000H	40	\$ 36.68
3/8 X 3-1/8"	S22103125B	300	\$ 178.45				S22103125H	40	\$ 29.75
3/8 X 3-3/8"	S22103375B	300	\$ 190.65				S22103375H	40	\$ 31.08
3/8 X 4"	S22104000B	300	\$ 193.73				S22104000H	40	\$ 32.57
3/8 X 5"	S22105000B	300	\$ 291.89				S22105000H	40	\$ 48.65
3/8 X 6"	S22106000B	300	\$ 300.30				S22106000H	40	\$ 49.92
3/8 X 6-3/4"	S22106750B	300	\$ 356.17				S22106750H	40	\$ 61.65
3/8 X 7"	S22107000B	300	\$ 359.64				S22107000H	40	\$ 65.51
3/8 X 8"	S22108000B	300	\$ 476.85				S22108000H	40	\$ 79.75
3/8 X 10"	S22110000B	300	\$ 751.65				S22110000H	40	\$ 137.13
3/8 X 12"	S22112000B	300	\$ 868.83				S22112000H	40	\$ 151.11
3/8 X 14"	S22114000B	300	\$ 1,074.76				S22114000H	40	\$ 179.18
3/8 X 16"	S22116000B	80	\$ 355.65				S22116000H	40	\$ 213.39
3/8 X 20"	S22120000B	100	\$ 929.85				S22120000H	25	\$ 232.46
CONSTRUCTION SCREW (STAINLESS 316)									
1/4 X 2"	I14102000B	800	\$ 325.44	I14102000P	220	\$ 98.21	I14102000H	40	\$ 20.34
5/16 X 2-1/2"	I20102500B	600	\$ 348.93				I20102500H	40	\$ 29.90
5/16 X 3"	I20103000B	500	\$ 370.55				I20103000H	40	\$ 38.43
5/16 X 4"	I20104000B	400	\$ 357.79				I20104000H	40	\$ 46.97
5/16 X 5"	I20105000B	300	\$ 501.14				I20105000H	40	\$ 73.50
5/16 X 6"	I20106000B	300	\$ 512.60				I20106000H	40	\$ 76.28





FINE SCREW

The Fine screw is designed especially for carpenters who do fine professional work. With its slim shank and bulging thread this screw can be used without damaging even the hardest wood. When building the most delicate of projects, contractors prefer U2 fasteners™ Fine screw for its modest head size.

The U2 Fine screw is available in lengths of 1-1/2" to 5" in hardened steel and in lengths of 1- 1/2" to 2-1/2" made of 316 Grade Stainless Steel.

#8 screws take a T-10 U-Bit. #9 screws take a T-15 U-Bit.

SCREW	BULK			BUCKET			PACKAGE		
SIZE	STOCK CODE	PCS	MSRP	STOCK CODE	PCS	MSRP	STOCK CODE	PCS	MSRP
8 X 1-1/4"	F08101250B	10,000	\$ 458.56	F08101250P	775	\$ 38.20	F08101250H	100	\$ 5.98
8 X 1-1/2"	F08101500B	6,500	\$ 304.67	F08101500P	700	\$ 38.20	F08101500H	100	\$ 6.12
8 X 2"	F08102000B	4,500	\$ 264.87	F08102000P	565	\$ 38.20	F08102000H	100	\$ 7.63
8 X 2-1/2"	F08102500B	3,500	\$ 248.31	F08102500P	475	\$ 38.20	F08102500H	100	\$ 9.12
8 X 2-3/4"	F08102750B	3,000	\$ 236.07	F08102750P	400	\$ 38.20	F08102750H	100	\$ 9.94
8 X 3-1/8"	F08103125B	2,000	\$ 167.44	F08103125P	400	\$ 38.20	F08103125H	100	\$ 11.14
9 X 3-1/8"	F09103125B	2,000	\$ 245.66	F09103125P	315	\$ 38.20	F09103125H	100	\$ 15.83
9 X 4"	F09104000B	1,000	\$ 255.48				F09104000H	50	\$ 16.32
9 X 5"	F09105000B	800	\$ 214.13				F09105000H	50	\$ 17.14
WHITE FINE SCREW									
8 X 2"	E08102000B	4,500	\$ 315.19	E08102000P	495	\$ 38.20	E08102000H	100	\$ 9.76
8 X 2-1/2"	E08102500B	3,500	\$ 310.05	E08102500P	390	\$ 38.20	E08102500H	100	\$ 11.66
8 X 2-3/4"	E08102750B	3,000	\$ 295.14	E08102750P	350	\$ 38.20	E08102750H	100	\$ 12.84
8 X 3-1/8"	E08103125B	2,000	\$ 238.82	E08103125P	290	\$ 38.20	E08103125H	100	\$ 15.34
FINE SCREW (STAINLESS 316)									
8 X 1-1/2"	K08101500B	6,500	\$ 914.76	K08101500P	670	\$ 98.21	K08101500H	100	\$ 15.72
8 X 2"	K08102000B	4,500	\$ 708.84	K08102000P	565	\$ 98.21	K08102000H	100	\$ 18.74
8 X 2-1/2"	K08102500B	3,500	\$ 693.28	K08102500P	435	\$ 98.21	K08102500H	100	\$ 24.31
8 X 3"	K08103000B	2,000	\$ 545.46	K08103000P	310	\$ 98.21	K08103000H	100	\$ 34.09
9 X 3"	K09103000B	2,000	\$ 616.21	K09103000P	275	\$ 98.21	K09103000H	100	\$ 38.51





RE-FINE SCREW

The Re-Fine screw is designed especially for carpenters who do fine professional work. With its slim shank and bulging thread this screw can be used without damaging even the hardest wood. When building the most delicate of projects, contractors prefer U2 fasteners™ Re-Fine screw for its modest head size and Re-Fine thread, depressing fibrous surface materials for a clean finished appearance.

The U2 Re-Fine screw is available in lengths of 2" to 3-1/8" in case hardened steel.

#8 screws take a T-10 U-Bit. #9 screws take a T-15 U-Bit.

SCREW	BULK			BUCKET			PACKAGE		
SIZE	STOCK CODE	PCS	MSRP	STOCK CODE	PCS	MSRP	STOCK CODE	PCS	MSRP
8 X 2"	R08102000B	4,500	\$ 264.87	R08102000P	565	\$ 38.20	R08102000H	100	\$ 7.63
8 X 2-1/2"	R08102500B	3,500	\$ 248.31	R08102500P	475	\$ 38.20	R08102500H	100	\$ 9.12
8 X 3-1/8"	R08103125B	2,000	\$ 167.44	R08103125P	400	\$ 38.20	R08103125H	100	\$ 11.14
9 X 3-1/8"	R09103125B	2,000	\$ 245.66	R09103125P	315	\$ 38.20	R09103125H	100	\$ 15.83
WHITE RE-FINE SCREW									
8 X 2"	Q08102000B	4,500	\$ 315.19	Q08102000P	495	\$ 38.20	Q08102000H	100	\$ 9.76
8 X 2-1/2"	Q08102500B	3,500	\$ 310.05	Q08102500P	390	\$ 38.20	Q08102500H	100	\$ 11.66
8 X 2-3/4"	Q08102750B	3,000	\$ 295.14	Q08102750P	350	\$ 38.20	Q08102750H	100	\$ 12.84
8 X 3-1/8"	Q08103125B	2,000	\$ 238.82	Q08103125P	290	\$ 38.20	Q08103125H	100	\$ 15.34





CAP SCREW



The Cap screw is an ideal light duty interior and exterior screw. This screw makes all your small projects easier with the drawdown strength of the head and the clean finish.

The Cap screw is available in lengths 1-1/4" to 3-1/8".

#8 screws take a T-15 U-Bit.

SCREW	BULK			BUCKET			PACKAGE		
SIZE	STOCK CODE	PCS	MSRP	STOCK CODE	PCS	MSRP	STOCK CODE	PCS	MSRP
8 X 1-1/4"	C08101250B	4,000	\$ 159.97	C08101250P	800	\$ 38.20	C08101250H	100	\$ 5.45
8 X 1-1/2"	C08101500B	3,000	\$ 138.25	C08101500P	650	\$ 38.20	C08101500H	100	\$ 6.32
8 X 1-3/4"	C08101750B	2,000	\$ 130.36	C08101750P	505	\$ 38.20	C08101750H	100	\$ 8.71
8 X 2"	C08102000B	2,000	\$ 137.13	C08102000P	480	\$ 38.20	C08102000H	100	\$ 9.13
8 X 2-1/2"	C08102500B	1,500	\$ 107.45	C08102500P	435	\$ 38.20	C08102500H	100	\$ 10.15
8 X 2-3/4"	C08102750B	1,200	\$ 103.45	C08102750P	385	\$ 38.20	C08102750H	100	\$ 11.16
8 X 3-1/8"	C08103125B	1,000	\$ 97.08	C08103125P	335	\$ 38.20	C08103125H	100	\$ 13.09
CAP SCREW (STAINLESS 305)									
8 X 1-1/4"	J08101250B	4,000	\$ 591.54	J08101250P	635	\$ 98.21	J08101250H	100	\$ 16.64
8 X 1-1/2"	J08101500B	3,000	\$ 626.34	J08101500P	425	\$ 98.21	J08101500H	100	\$ 26.10





STEEL SIDING SCREW

The Steel Siding screw is an ideal metal roofing, siding, garage door seal, trim and flashing screw, with a low profile white powder coated head and EPDM washer.

The Steel Siding screw is available in a 1-1/2" length.



SCREW	BULK			BUCKET			PACKAGE		
SIZE	STOCK CODE	PCS	MSRP	STOCK CODE	PCS	MSRP	STOCK CODE	PCS	MSRP
10 X 1-1/2"	M10101500B	2,300	\$ 249.62	M10101500P	320	\$ 38.20	M10101500H	50	\$ 7.13





VINYL EXTRUSION SCREW

The Vinyl Extrusion screw is an adjustable screw ideal for vinyl window retro-fits over old aluminum window frames. It has a small low profile white powder coated head and tek drill point.

The Vinyl Extrusion screw is available in a 3-1/8" length.

These #10 screws take a standard T-25 Bit.



SCREW				BUCKET			PACKAGE		
SIZE	STOCK CODE	PCS	MSRP	STOCK CODE	PCS	MSRP	STOCK CODE	PCS	MSRP
10 X 3-1/8"	V10103125B	800	\$ 193.40	V10103125P	200	\$ 52.32	V10103125H	50	\$ 15.71





THE ORIGINAL

TOPSTAR™
FASTENING SYSTEM



Crown & Bit



Crown
& Bit when
assembled

SCREW	BULK			BUCKET			PACKAGE		
SIZE	STOCK CODE	PCS	MSRP	STOCK CODE	PCS	MSRP	STOCK CODE	PCS	MSRP
1/4 - 3/8 X 2-1/2"	T00102500B	500	\$ 711.47	T00102500T	100	\$ 148.69	T00102500H	18	\$ 30.52
1/4 - 3/8 X 3-1/8"	T00103125B	500	\$ 801.47	T00103125T	100	\$ 165.41	T00103125H	18	\$ 32.70
1/4 - 3/8 X 4"	T00104000B	500	\$ 987.28	T00104000T	100	\$ 203.46	T00104000H	18	\$ 40.22
CROWN BIT							B00250000Z	1	\$ 12.91



The adjustable screw replaces shimming and can make door hanging a one person job.

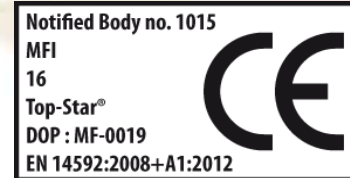
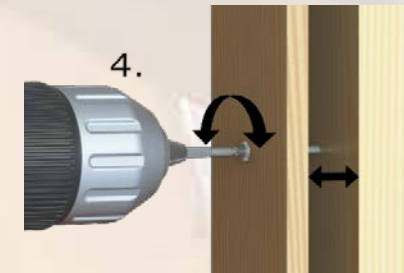
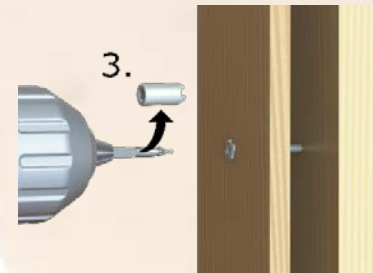
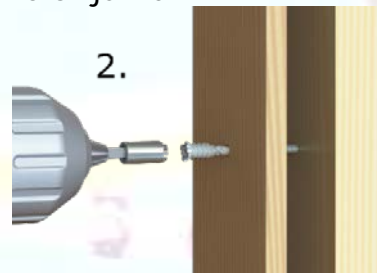
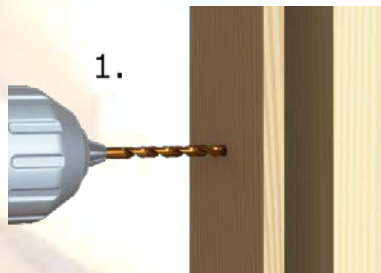
Easy 4 Step Wood to Wood Installation

1. Predrill window frame/ door jamb (only) with 5/16" drill

2. Engage crown bit into TopStar™ screw head and drive flush to surface of frame or jamb.

3. For adjustments remove crown from bit.

4. Engage bit into center hole of TopStar™ screw head and adjust to your requirements.





U-BITS

The U-Bits are specifically designed to fit snug and firm on the **Tight Star Recess** of the U2 fasteners™ screw assortment. However, U2 fasteners also fit the traditional star drive. U-Bits are impact driver ready and are made of the same case hardened steel as the fasteners to prevent wear and tear.

BIT	PACKAGE			CARDED		
SIZE	STOCK CODE	PCS	MSRP	STOCK CODE	PCS	MSRP
10-1"	B00210010W	25	\$ 22.60	B00210010X	2	\$ 2.31
10-2"	B00210020W	25	\$ 54.79	B00210020X	2	\$ 4.67
10-3"	B00210030W	25	\$ 64.36	B00210030X	2	\$ 5.82
15-1"	B00215010W	25	\$ 22.60	B00215010X	2	\$ 2.31
15-2"	B00215020W	25	\$ 54.79	B00215020X	2	\$ 4.67
15-3"	B00215030W	25	\$ 64.36	B00215030X	2	\$ 5.82
20-1"	B00220010W	25	\$ 22.60	B00220010X	2	\$ 2.31
20-2"	B00220020W	25	\$ 54.79	B00220020X	2	\$ 4.67
25-1"	B00225010W	25	\$ 22.60	B00225010X	2	\$ 2.31
25-2"	B00225020W	25	\$ 54.79	B00225020X	2	\$ 4.67
25-3"	B00225030W	25	\$ 64.36	B00225030X	2	\$ 5.82
30-1"	B00230010W	25	\$ 22.60	B00230010X	2	\$ 2.31
30-2"	B00230020W	25	\$ 54.79	B00230020X	2	\$ 4.67
30-3"	B00230030W	25	\$ 64.36	B00230030X	2	\$ 5.82
40-1"	B00240010W	25	\$ 22.60	B00240010X	2	\$ 2.31
40-2"	B00240020W	25	\$ 54.79	B00240020X	2	\$ 4.67
40-3"	B00240030W	25	\$ 64.36	B00240030X	2	\$ 5.82



DISPLAY AND PACKING



Carded Bit



Bulk Box
Carbon Steel Screws



Bulk Box
Stainless Steel Screws



Header Card

Store Display 26"W x 22"D x 62"H



Bucket



Package

