

THE ORIGINAL  
**TOPSTAR™ SCREW**  
FASTENING SYSTEM

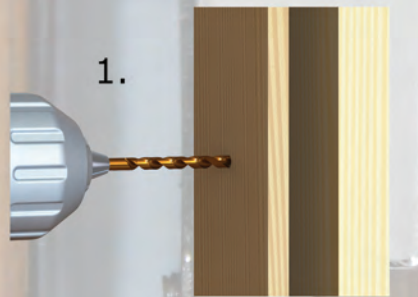
The patented adjustable screw replaces shimming and can make door hanging a one person job.

Ideal for anything where you need precise adjustments.  
Windows, Ceilings, Doors, Floors and Cabinets

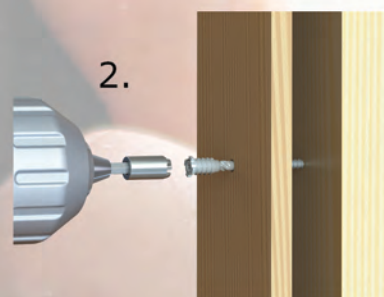
TOPSTAR™ SCREW



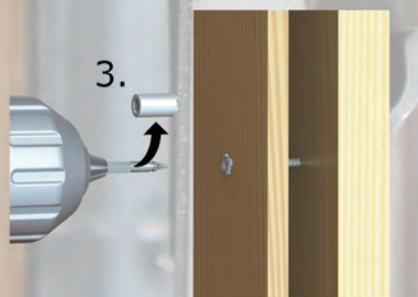
## Easy 4 Step Wood to Wood Installation



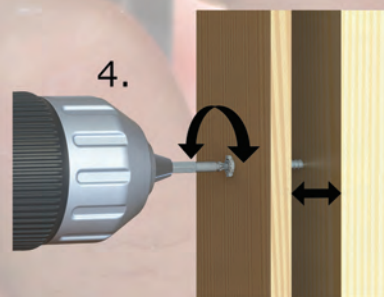
1. Predrill window frame/ door jamb (only) with 5/16" drill bit.



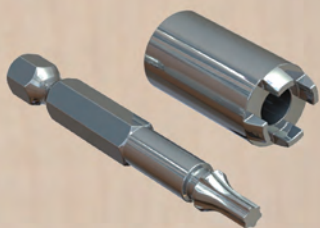
2. Engage crown bit into TopStar™ screw head and drive flush to surface of frame or jamb.



3. For adjustments remove crown from bit.



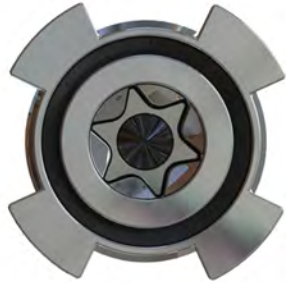
4. Engage bit into center hole of TopStar™ screw head and adjust to your requirements.



Crown Bit



Available in 2-1/2", 3-1/8" and 4" length.  
(For other lengths please call)



## TOPSTAR™ ADJUSTABLE SCREW

### The Sleeve

- Free Spinning Sleeve  
On Top Of The Screw Core

### Reamer Thread

- Enlarges The Hole Created By The Screw  
For Easier Transition To The Upper Sleeve

### Blade Cutting Thread

- Cuts A Smooth Path Into  
Natural Or Synthetic Materials
- Provides The Connection With  
A High Withdrawal Resistance

### Type 17 Cut

- Sharp Point Groove  
To Capture Chips

## CROWN BIT™

### Two-Piece Crown Bit

- Engages Both The Sleeve Section That Surrounds  
The Screw Head And The Screw Core Simultaneously,  
Turning Both Until The Sleeve Sits Flush
- By Removing The Outer Crown Portion Of The Bit,  
You Can Then Turn The Main Star-Drive  
To Adjust Plumb Or Level